

Grantmakers in the Arts

Foundation Funding for Arts Education An Update on Foundation Trends

Steven Lawrence

Director of Research, Foundation Center

Reina Mukai

Research Manager, Foundation Center

Published by Grantmakers in the Arts with research and analysis by Foundation Center
Supported by The William and Flora Hewlett Foundation and Windgate Charitable Foundation

April 2015



Our Commitment to Arts Education

Grantmakers in the Arts has a long history of providing research, best practices, and trends for our members who support arts education. This information is disseminated through our triannual publication, the Reader, web conferences, sessions and preconferences at our annual conference, special arts education funder convenings, and publications like this one. The Arts Education Funders Coalition within GIA actively works to promote shared information and to monitor and change public policies to increase arts access to all children and adults.

We are pleased to once again work with Foundation Center on this update of our 2005 report Foundation Funding for Arts Education. It is important to keep in mind that these data do not reflect arts education funding from the

public sector. The sampling base description is in the sidebar on this page. Thank you to the many courageous and dedicated funders who prioritize arts education in their grantmaking portfolios.

Janet Brown, president & CEO

Report Authors

Steven Lawrence

Director of Research, Foundation Center

Reina Mukai

Research Manager, Foundation Center

About Grantmakers in the Arts

A national network of private, public, and corporate arts funders, GIA provides leadership and service that advance the use of philanthropic and governmental resources to support the growth of arts and culture. GIA is the only national association of private and public funders making grants to artists and arts organizations in America.

About Foundation Center

Established in 1956, Foundation Center is the leading source of information about philanthropy worldwide. Through data, analysis, and training, it connects people who want to change the world to the resources they need to succeed. Foundation Center maintains the most comprehensive database on US and, increasingly, global grantmakers and their grants — a robust, accessible knowledge bank for the sector. It also operates research, education, and training programs designed to advance knowledge of philanthropy at every level. Thousands of people visit Foundation Center's website each day and are served in its five library/learning centers and at more than 470 Funding Information Network locations nationwide and around the world.

Published by Grantmakers in the Arts with research and analysis by Foundation Center

Supported by The William and Flora Hewlett Foundation and Windgate Charitable Foundation

Copyright 2015 Foundation Center

Sampling Base

The information presented in this report is based on Foundation Center's annual grants sets. Each set includes all of the grants of \$10,000 or more awarded to organizations by 1,000 of the largest US foundations by total giving and represents roughly half of total grant dollars awarded by the universe of independent, corporate, community, and grantmaking operating foundations in that year. Specifically, the 2012 grants set included 153,821 grants totaling \$22.4 billion; and the 1999 set included 81,112 grants totaling \$8.6 billion. Grants to individuals and grants from donor-designated and restricted funds of community foundations are not included.

In-School and Out-of-School

In this report, Foundation Center did not differentiate between in-school and out-of-school programs.

Capital Support and All Other Support

For the purpose of this report, grants have been separated into capital (buildings/facilities) and all other types of support (programmatic/administration/etc.).

Foundation Funding for Arts Education

An Update on Foundation Trends

Arts education provides the means for sharing beautiful and provocative ideas and images, cultural and political knowledge, and insights about humanity across generations. In a world that grows ever more populous and competitive, arts education also offers a means for nurturing the creative thinking that will ideally lead to better solutions to the world's many challenges.

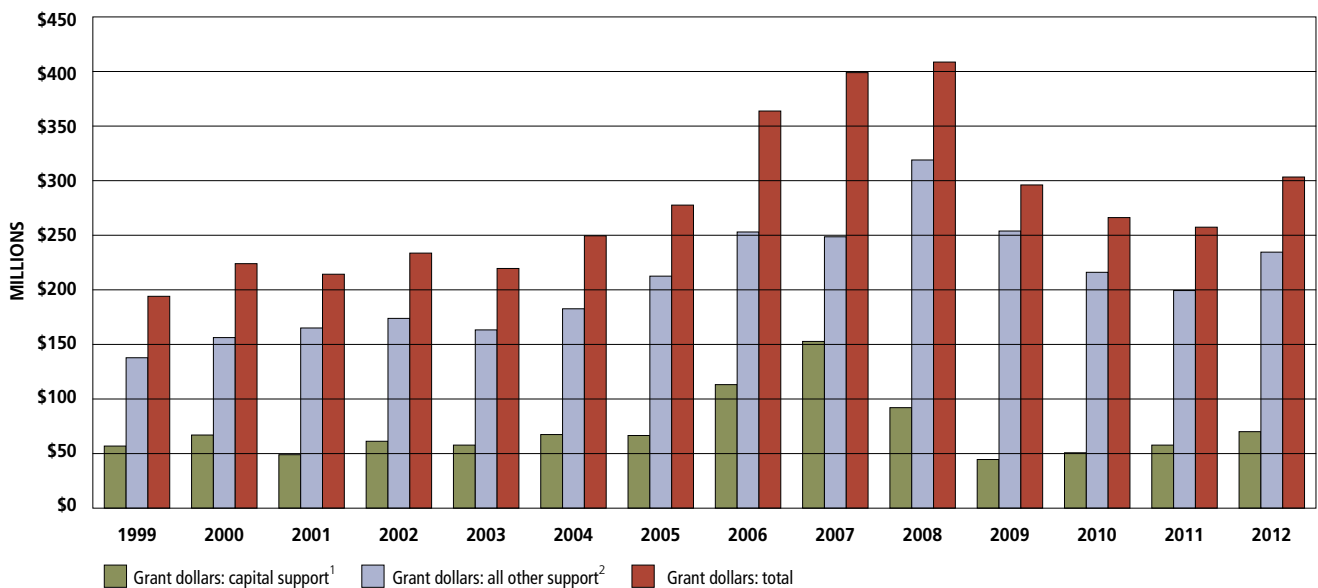
To document the size and scope of arts education grantmaking by US foundations, Foundation Center and Grantmakers in the Arts collaborated on a 2005 report,

Key Findings

- Support for arts education grew 57 percent between 1999 and 2012
- Performing arts education benefited from roughly half of arts education giving
- Arts organizations received three out of five arts education dollars and four out of five arts education grants
- A majority of arts education grants targeted children and youth

Foundation Funding for Arts Education. The report examined foundation grantmaking for arts education between 1999 and 2003 and represented the most comprehensive analysis of foundation arts education support available. This new report updates the analysis of foundation arts education funding through 2012 and illustrates how support for arts education has evolved during a period of

FIGURE 1. Foundation giving for arts education, 1999 to 2012



Based on all arts education grants of \$10,000 or more awarded by 1,000 of the largest US foundations.

1. Grants provide capital support and may occasionally be for multiple types of support.

2. Includes all grants except those identified as providing capital support. Not all grants are able to be coded for types of support; therefore some grants in this category may be for capital support.

pronounced economic volatility and dramatic political and technological change.

TRENDS IN ARTS EDUCATION FUNDING, 1999 THROUGH 2012

Since 1999, this country has experienced an unprecedented economic boom, a stock market downturn and recession,

economic recovery, a major economic crisis, and another economic recovery — albeit slow and uneven. Despite these dramatic swings, giving for arts education by funders included in Foundation Center’s annual grants set (see “Sampling Base” for details) rose 57 percent, from \$193.7 million in 1999 to \$304.4 million

Rank	Foundation	State	Fdn type ¹	Amount	%	No. of grants	Arts education giving as a % of overall giving	% Change in arts education giving, '99-'12 ²	Arts education capital support dollars ³	Arts education other types of support dollars ⁴	
1.	Robina Foundation	MN	IN	\$18,000,000	5.9	1	0.0	68.1	N/A	\$18,000,000	\$0
2.	Andrew W. Mellon Foundation	NY	IN	16,282,455	5.3	37	1.0	6.4	99.0	2,075,000	14,207,455
3.	Karsh Family Foundation	CA	IN	9,100,000	3.0	2	0.1	61.3	N/A	9,090,000	10,000
4.	Windgate Charitable Foundation	AR	IN	8,558,803	2.8	69	1.8	32.5	1,313.2	4,982,762	3,576,041
5.	William and Flora Hewlett Foundation	CA	IN	6,415,000	2.1	23	0.6	2.1	129.5	300,000	6,115,000
6.	Wallace Foundation	NY	IN	6,271,500	2.1	5	0.1	10.6	77.2	0	6,271,500
7.	Kresge Foundation	MI	IN	5,698,500	1.9	17	0.5	4.5	19.2	2,000,000	3,698,500
8.	Donald W. Reynolds Foundation	NV	IN	5,631,453	1.9	1	0.0	4.0	1,209.6	5,631,453	0
9.	PNC Foundation	PA	CS	5,224,690	1.7	135	3.6	11.6	16,486.3	150,000	5,074,690
10.	Herb Alpert Foundation	CA	IN	4,776,140	1.6	15	0.4	68.2	N/A	0	4,776,140
11.	John D. and Catherine T. MacArthur Foundation	IL	IN	4,737,000	1.6	11	0.3	2.4	753.5	0	4,737,000
12.	Surdna Foundation	NY	IN	4,591,000	1.5	39	1.0	15.6	29.2	0	4,591,000
13.	Colburn Foundation	CA	IN	3,700,000	1.2	10	0.3	63.1	N/A	0	3,700,000
14.	John S. and James L. Knight Foundation	FL	IN	3,550,000	1.2	20	0.5	6.3	80.4	20,000	3,530,000
15.	Annenberg Foundation	CA	IN	3,424,772	1.1	29	0.8	9.4	(27.0)	50,000	3,374,772
16.	Sherwood Foundation	NE	IN	3,365,790	1.1	13	0.3	9.3	N/A	2,008,704	1,357,086
17.	Peter Jay Sharp Foundation	NY	IN	3,125,000	1.0	5	0.1	14.7	78.1	3,000,000	125,000
18.	New York Community Trust	NY	CM	2,870,500	0.9	73	2.0	2.5	313.0	243,100	2,627,400
19.	Polk Bros. Foundation	IL	IN	2,785,000	0.9	60	1.6	14.7	784.1	200,000	2,585,000
20.	Charles Stewart Mott Foundation	MI	IN	2,690,024	0.9	6	0.2	3.2	56.2	1,549,924	1,140,100
21.	Geraldine R. Dodge Foundation	NJ	IN	2,688,000	0.9	75	2.0	28.9	47.0	0	2,688,000
22.	Houston Endowment	TX	IN	2,605,000	0.9	14	0.4	3.3	221.6	275,000	2,330,000
23.	Jack Kent Cooke Foundation	VA	IN	2,595,121	0.9	12	0.3	31.2	N/A	0	2,595,121
24.	John and Lisa Pritzker Family Fund	CA	IN	2,575,000	0.8	4	0.1	15.7	N/A	0	2,575,000
25.	Grainger Foundation	IL	IN	2,536,481	0.8	5	0.1	8.0	N/A	10,000	2,526,481
SUBTOTAL				\$133,797,229	44.0	681	18.2				
All other foundations				170,591,102	56.0	3,052	81.8				
TOTAL				\$304,388,331	100.0	3,733	100.0				

Based on all arts education grants of \$10,000 or more awarded by 560 of the largest US foundations. Only grants to organizations are included.

1. IN = Independent; CS = Corporate; CM = Community.

2. Based on all arts education grants of \$10,000 or more awarded by 507 of the largest US foundations for 1999.

3. Grants provide capital support and may occasionally be for multiple types of support.

4. Includes all grants except those identified as providing capital support. Not all grants are able to be coded for types of support; therefore some grants in this category may be for capital support.

N/A = not available.

in 2012. (Adjusted for inflation, arts education giving rose 14 percent.) This rate of growth was slower than the increase in overall foundation giving recorded during this period but on par with growth in arts funding overall. As a result, arts education's share of total arts funding remained steady at just over 14 percent. By number of grants awarded, arts education support grew 49 percent during this period, from roughly 2,500 to over 3,700 grants.

While giving for arts education increased between 1999 and 2012, growth was not consistent throughout this period. Arts education grant dollars grew steadily between 1999 and 2005, and this growth accelerated between 2006 and 2008. Grant dollars for the field peaked at \$410.2 million in 2008, provided through 4,027 grants. In the first full year of the Great Recession, however, funding for arts education declined 28 percent. It then rebounded slightly in 2010 before slipping an additional 3 percent in 2011. The arts education field returned to strong growth in funding in 2012, when grant dollars increased a robust 18 percent.

The Robina Foundation led all other funders by amount of giving for arts education in 2012, with a single \$18 million grant to Yale University to endow the Binger Center for New Theater. If capital grants were excluded, the Andrew W. Mellon Foundation would have ranked as the top arts education funder. The foundation made 34 non-capital arts

education grants totaling \$14.2 million in 2012, with the majority supporting curriculum and program development. Its overall arts education support totaled \$16.3 million.

Among the top 25 arts education funders in 2012, a total of 13 allocated at least 10 percent of their funding for the field. Those directing the largest shares to arts education included the Herb Alpert Foundation (68.2 percent), Robina Foundation (68.1 percent), Colburn Foundation (63.1 percent), and Karsh Family Foundation (61.3 percent). By comparison, the second-ranked Mellon Foundation directed 6.4 percent of its total dollars to arts education.

Finally, recently established foundations constituted a growing segment of arts education funders. Overall, the number

TABLE 2. Giving for arts education by number of grants, 1999 and 2012

	1999 Capital support	2012 Capital support
Grant range	No. of grants	No. of grants
\$1 million and over	3.2%	7.0%
\$100,000 - \$1 million	35.5%	35.7%
\$50,000 - \$100,000	22.9%	14.1%
\$25,000 - \$50,000	15.5%	16.1%
\$10,000 - under \$25,000	22.9%	27.1%
Total	100.0%	100.0%
	1999 All other support	2012 All other support
Grant range	No. of grants	No. of grants
\$1 million and over	0.6%	0.7%
\$100,000 - \$1 million	11.7%	13.0%
\$50,000 - \$100,000	15.4%	16.5%
\$25,000 - \$50,000	25.8%	25.3%
\$10,000 - under \$25,000	46.5%	44.5%
Total	100.0%	100.0%

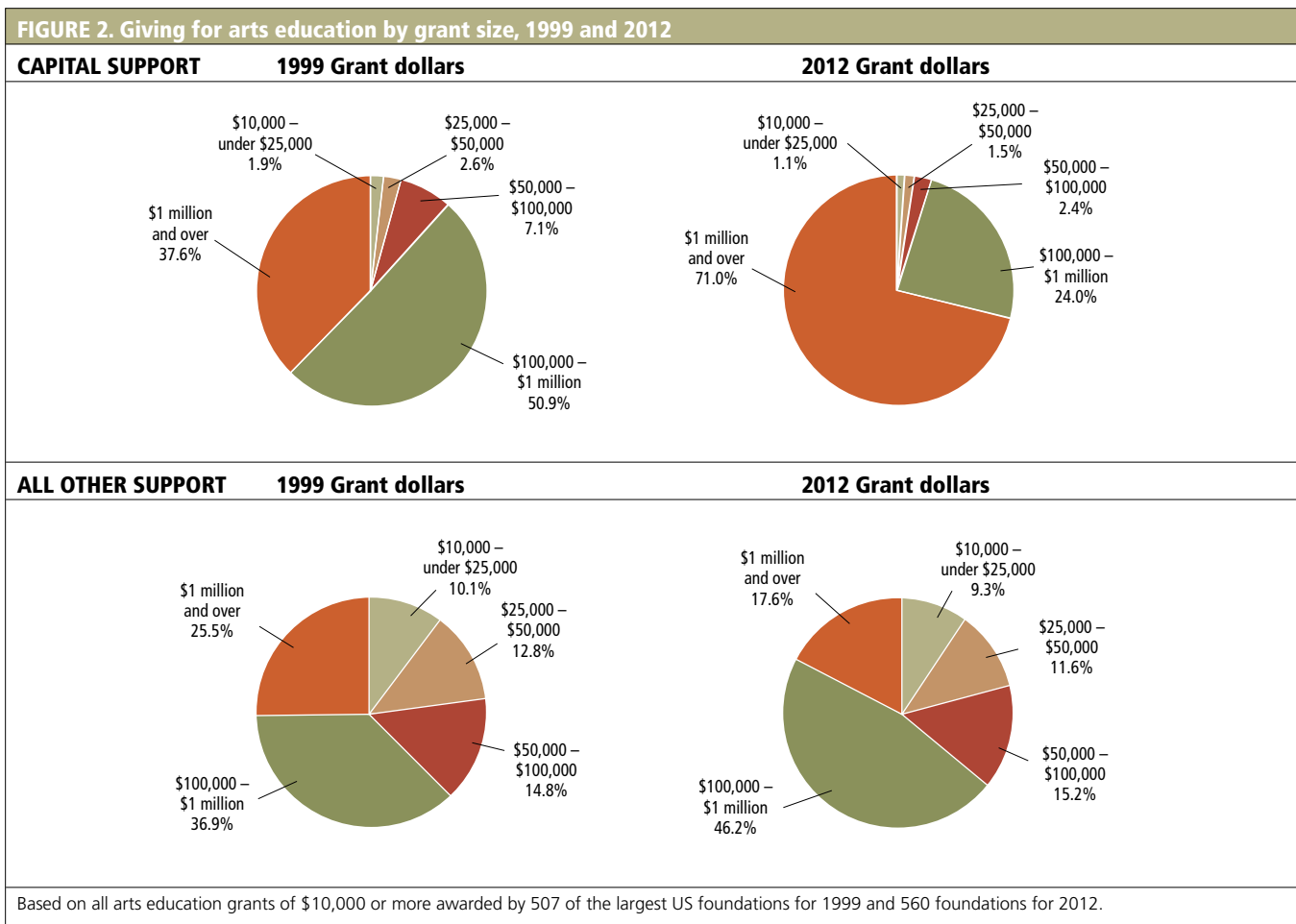
Based on all arts education grants of \$10,000 or more awarded by 507 of the largest US foundations for 1999 and 560 foundations for 2012.

of arts education funders rose from 507 in 1999 to just over 580 in 2006, before slipping back to 560 in 2012. In the 2012 set, foundations formed since 1995 represented 18 percent of the number of arts education funders in the sample, and these foundations awarded roughly one-quarter of arts education dollars. Foundations established during this period that ranked among top arts education funders included the Robina Foundation (2004), John and Lisa Pritzker Family Fund (2002), Colburn Foundation (1999), Sherwood Foundation (1999), Karsh Family Foundation (1997), and Jack Kent Cooke Foundation (1997).

ARTS EDUCATION FUNDING BY GRANT SIZE

A substantial share of arts education grants are small. In 2012, over two-fifths (44 percent) of arts education grants were for less than \$25,000, compared to just under two-fifths (39 percent) of foundation grants overall. This modestly higher proportion for arts education may reflect a heavier concentration of program grants, which tend to be smaller on average than most other types of support.

By comparison, arts education grants of at least \$1 million accounted for just 1 percent of the number of grants awarded but nearly 30 percent of arts education



dollars. In 2012, the majority of these large arts education grants provided capital support, and 71 percent of the grant dollars allocated through these big grants funded capital projects. As a result, the average arts education grant (\$81,540) was more than three times the size of the median or typical grant (\$25,000).

ARTS EDUCATION FUNDING BY FOUNDATION TYPE

Independent foundations account for the dominant share of foundation giving for arts education, regardless of the type of support awarded. They provided roughly 93 percent of capital support dollars for arts education in 1999 and 2012. Among arts education funding for other types of support, independent foundations accounted for 83 percent of grant dollars in 1999 and 77 percent in 2012. Still, community foundations played an important role in supporting arts education.

While they provided a relatively modest 5 percent of capital support dollars and 12 percent of dollars for all other types of support in 2012, community foundations accounted for close to one-fifth (19 percent) of the number of capital support grants for arts education and one-quarter (24 percent) of the number of all other arts education grants. Similarly, corporate foundations awarded about 9 percent of 2012 arts education grant dollars but over twice that share of grants (19 percent).

PRIORITIES IN ARTS EDUCATION FUNDING

Performing Arts Education

Overall, performing arts education accounted for roughly half of arts education grant dollars and grants in 2012. Music education constituted the biggest share of performing arts education dollars (34 percent), followed by “Other Performing Arts Education” (27 percent), which

includes funding for multidisciplinary performing arts education institutions and programs and theater. A smaller share of funding supported dance education (12 percent). Support for performing arts education more than doubled between 1999 and 2012 — funding rose 103 percent over 1999

TABLE 3. Giving for arts education by foundation type, 1999 and 2012									
1999 Capital support					2012 Capital support				
Foundation Type	Amount	%	No. of Grants	%	Amount	%	No. of Grants	%	
Independent	52,399,981	93.0	261	84.1	65,277,442	93.8	146	73.4	
Community	2,889,057	5.1	24	7.8	3,182,495	4.6	37	18.6	
Corporate	1,051,000	1.9	24	7.8	1,130,160	1.6	16	8.0	
Operating	25,000	0.0	1	0.3	0	0.0	0	0.0	
Total	\$56,365,038	100.0	310	100.0	\$69,590,097	100.0	199	100.0	
1999 All other support					2012 All other support				
Foundation Type	Amount	%	No. of Grants	%	Amount	%	No. of Grants	%	
Independent	113,638,672	82.8	1,462	66.8	180,128,456	76.7	2,012	56.9	
Community	6,310,769	4.6	195	8.9	27,858,200	11.9	833	23.6	
Corporate	13,525,088	9.9	479	21.9	25,993,977	11.1	678	19.2	
Operating	3,829,020	2.8	52	2.4	817,601	0.3	11	0.3	
Total	\$137,303,549	100.0	2,188	100.0	\$234,798,234	100.0	3,534	100	

Based on all arts education grants of \$10,000 or more awarded by 507 of the largest US foundations for 1999 and 560 foundations for 2012.

TABLE 4. Foundation giving for arts education by major field and subfield, 2012

	Amount	%	No. of grants	%
Performing arts education	\$140,549,704	46.2	1,889	50.6
Music	47,530,955	15.6	675	18.1
Theater	38,087,298	12.5	427	11.4
Dance	16,660,728	5.5	293	7.8
Other performing arts education	38,270,723	12.6	494	13.2
Multidisciplinary arts education¹	\$84,907,550	27.9	1,042	27.9
Cultural/ethnic awareness	9,345,803	3.1	57	1.5
Other multidisciplinary arts education	75,561,747	24.8	985	26.4
Visual arts education	\$43,930,910	14.4	477	12.8
Museum education	\$20,933,114	6.9	170	4.6
Art museum education	13,574,447	4.5	105	2.8
Other museum education	7,358,667	2.4	65	1.7
Literary arts education	\$8,036,853	2.6	96	2.6
Other	\$6,030,200	2.0	59	1.6
Total	\$304,388,331	100.0	3,733	100.0

Based on all arts education grants of \$10,000 or more awarded by 560 of the largest US foundations. Only grants to organizations are included.

1. Includes multipurpose arts education programs and centers.

(47 percent after inflation) — and growth in this area far exceeded increases in arts education funding overall. Giving was boosted by above-average growth in the number of grants — notably in the areas of dance and theater education. In addition, 5 of the 10 largest arts education grants in 2012 benefited performing arts education, including the largest overall arts education grant: an \$18 million capital support grant awarded by the Robina Foundation to Yale University to endow the Binger Center for New Theater.

Among the largest funders of performing arts education were the Robina Foundation (noted above) and the Karsh Family Foundation, which gave \$9.1 million through two grants, the majority of which was awarded to Duke University’s Karsh International School for its endowment and the Jazz Loft Project.¹ The third-ranked Herb Alpert Foundation provided

\$3.6 million nationally to performing arts education institutions, followed closely by the Colburn Foundation, which also gave \$3.6 million in grants mainly to Los Angeles area–based performing arts institutions. Several foundations targeted arts education programs for underserved or minority youth. For example, the Prudential Foundation awarded \$220,000 to the Alvin Ailey Dance Foundation (NY) for AileyCamp Newark and AileyDance Kids Newark, an organization dedicated to using dance to enhance the lives of underserved children.

Multidisciplinary Arts Education

Funding for multidisciplinary arts education, which includes broad arts-in-education centers and programs, multidisciplinary arts schools, and ethnic arts education programs, also doubled between 1999 and 2012. Adjusted for inflation, funding was up 46 percent. The growth in the number of grants also significantly increased during this time (up 72 percent). This area accounted for the second largest share of arts education dollars (28 percent) and grants (28 percent). Within the field of multidisciplinary arts education, support for broad ethnic arts education programs increased elevenfold.² Among the larger grants awarded for ethnic arts education in 2012 was a \$100,000 grant from the Coca-Cola Foundation to the National Black Arts Festival for its education programs.

The Arkansas-based Windgate Charitable Foundation was the largest funder of

multipurpose arts education programs. Windgate awarded \$6.6 million across 39 grants, including a \$2 million award to the Penland School of Crafts (NC), an international center for craft education; and a \$1 million grant to Boston-based North Bennet Street School, a trade and craftsmanship school for new facilities. The second-ranked William and Flora Hewlett Foundation provided \$4.5 million, including \$1.1 million to the California County Superintendents Educational Services Association

for the Reinvigorating Arts Education in California project. Other leading funders of arts-in-the-schools and arts and education programs included the Wallace, A. W. Mellon, Kresge, and Surdna Foundations and the Houston Endowment.

Visual Arts Education

Visual arts education, which includes multipurpose visual arts programs and centers and those with a single focus, such as photography or sculpture, received 14 percent

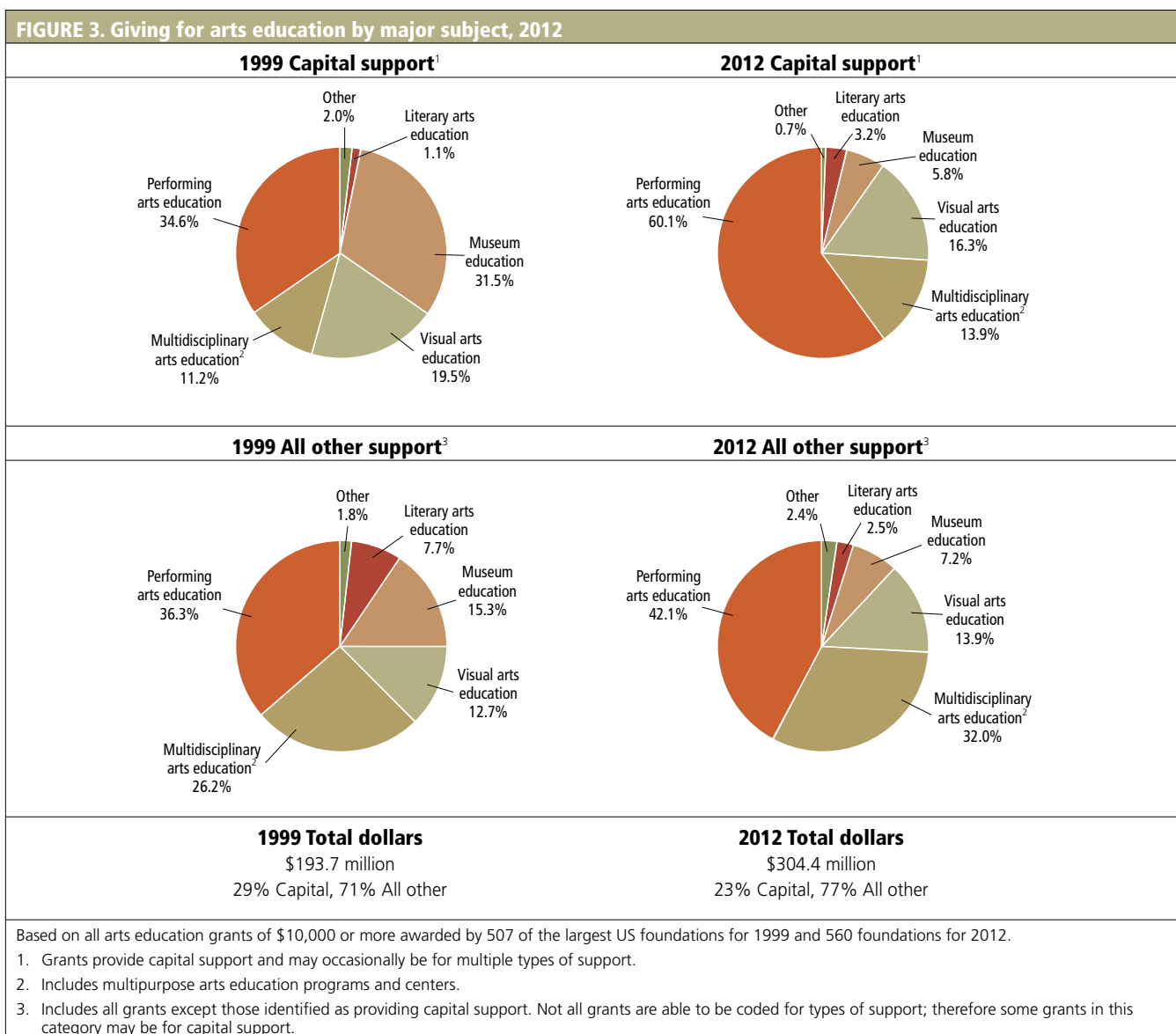
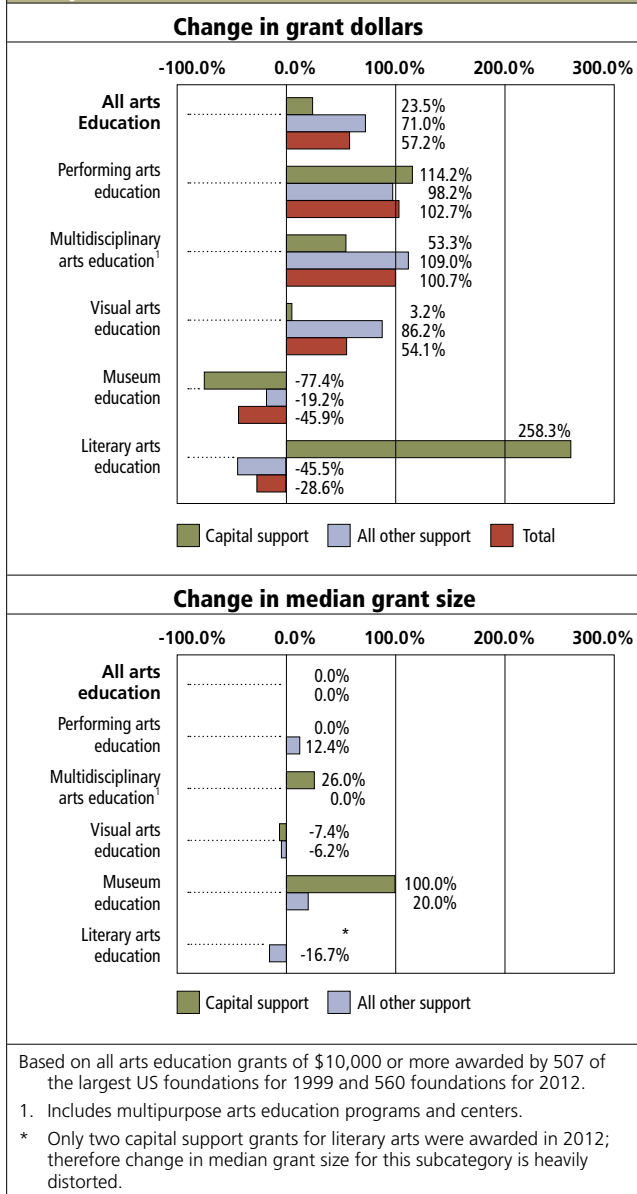


FIGURE 4. Change in giving for arts education by major subject, 1999 and 2012



of arts education dollars in 2012. This area accounted for the third largest share of arts education dollars and grants. Several of the biggest visual arts education grants provided capital support — including the largest grant, a \$5.6 million award by the Donald W. Reynolds Foundation to the University of Arkansas for the construction of the Steven I. Anderson Design Center.

Many of the grants were awarded to colleges and universities for fine arts programs, to museums exclusively for visual arts education programming, and to visual arts education organizations benefiting children and youth. In the latter category, the Ford Foundation awarded a \$446,529 grant to the Jakarta-based Kampung Halaman Foundation for the work of a national youth-led network to produce multimedia digital content, conduct online media campaigns, and strengthen youth leadership in local decision-making processes; the Surdna Foundation awarded \$270,000 to the Maryland Institute College of Art for mentoring, support, and financial aid to high school students and visual art teachers engaged in intensive, summer residency studio art experiences that will increase skills for both college preparedness, teacher quality, and impact; and the James Irvine Foundation provided \$185,000 to Big Draw LA, to hold a series of participatory public drawing events at traditional and nontraditional venues and to develop a mobile device application to engage younger audiences in creating and sharing their drawings. Also included in this subfield were grants to visual arts schools for tuition aid for young visual artists.

Museum Arts Education

Funding for broad-based museum arts education declined between 1999 and 2012, and its share of arts education dollars fell from 20 percent to 6.9 percent. Contributing to this reduction were the two top museum arts funders in 1999: the Robert W. Woodruff and

Ewing Marion Kauffman Foundations. The Woodruff Foundation reported substantially lower levels of giving for this purpose, while the Kauffman Foundation did not award any grants for this area in 2012. The share of number of grants also decreased, from 8.6 percent to 4.6 percent. The majority of support targeted general education activities, facilities, and

Defining Arts Education Grantmaking

For the purpose of this study, arts education grantmaking has been divided into the major areas of multidisciplinary arts education, performing arts education, visual arts education, museum arts education, and literary arts education and broadly defined as supporting:

- Single-discipline and multidisciplinary arts-in-education and arts and education organizations and programs
- Educational activities and outreach programs of museums, performing arts companies, visual arts centers, and other arts groups
- Development of arts curriculum, arts-related classroom space, and arts and performing arts facilities at schools, colleges, and universities
- Scholarships, fellowships, and residencies for young and emerging artists provided through arts groups and degree-granting arts institutions
- Community arts schools and arts education programs conducted by multipurpose community organizations and youth development groups
- Research on the role and effectiveness of arts education and advocacy to expand and enhance its influence

resources of art museums. Grants also supported educational programs of general purpose, children's, ethnic/folk arts, history, and specialized museums.³ Similar to other fields of arts education funding, a few of the very largest museum grants supported capital projects, such as the Champlin Foundations' \$250,000 grant to the Rhode Island School of Design to complete the Radeke building restoration project at the Museum of Art. Nevertheless, the vast majority of grant dollars and grants for museum arts education supported programming, including school-based programs. For example, 2012 grants included \$150,000 in support from the Claude Worthington Benedum Foundation to the Children's Museum of Pittsburgh to establish hands-on learning laboratories in museums, libraries, and classrooms in West Virginia and southwestern Pennsylvania; and PNC Foundation's \$100,000 grant for the Fernbank Museum of Natural History (GA) for a collaboration with the Robert Woodruff Arts Center (Young Audiences Woodruff) and Sheltering Arms Early Education and Family Center.

Literary Arts Education

Funding for literary arts education accounted for 2.6 percent of arts education support in 2012, down slightly from the 3.1 percent share in 1999. Nonetheless, the number of grants awarded increased from 78 to 96 grants. Since even the largest funders of literary arts education reported, on average, 2 or fewer grants, this finding reflects an increase in the

Identifying Arts Education Grants

Consistent with the definition of arts education funding employed for this report (see “Defining Arts Education Grantmaking”), this analysis includes all grants with a primary or secondary grant purpose or recipient type code for arts education or performing arts education; a primary grant purpose code for multidisciplinary arts, folk arts, arts councils, visual arts, art museums, ethnic/folk art museums, children’s museums, performing arts, literary services, and arts and artist’s service activities and a secondary grant purpose code for education (excluding libraries); and a primary grant purpose code of education (excluding libraries), camps, and youth development and a secondary grant purpose code for multidisciplinary arts, folk arts, arts councils, visual arts, art museums, ethnic/folk art museums, children’s museums, performing arts, literary services, and arts and artist’s service activities.

number of funders making grants. Within this subfield, the types of programs supported ranged from undergraduate and graduate literature programs to school- and community-based programs in poetry, literature, reading, and creative writing. Among the larger grants awarded for this area was a \$896,000 award from the Andrew W. Mellon Foundation to Book Arts Press (VA) for the Andrew W. Mellon Fellowship of Scholars in Critical Bibliography; a \$250,000 award from the Zell Family Foundation to the University of Michigan for the MFA Creative Writing program; and the Brown Foundation’s \$80,000 grant to Writers in the Schools (TX) for in-school creative writing workshops and artist visits.

ARTS EDUCATION FUNDING BY RECIPIENT TYPE

Arts education giving overwhelmingly targets arts organizations, with entities that focus exclusively on multidisciplinary arts education, postsecondary arts education, and performing arts education capturing the largest shares of support. In 2012, just over three-fifths of arts education grant dollars and nearly four-fifths of grants supported arts organizations. Multidisciplinary arts education organizations — e.g., the Harlem School of the Arts (NY) and the Center for Arts-Inspired Learning (OH) — accounted for the largest share of funding (12 percent) among arts organizations. Following these organizations by share of grant dollars were arts-focused higher and graduate educational institutions (11 percent) — e.g., the Juilliard School (NY) and Berklee College of Music (MA) — and performing arts education organizations (8 percent) — e.g., the Colburn School of the Performing Arts (CA) and Lincoln Center Institute (NY). Other arts organizations receiving at least 5 percent of arts education giving in 2012 included music organizations and museums.

Arts education giving in the latest year also heavily focused on general purpose higher and graduate educational institutions and elementary and secondary schools. Together, these institutions accounted for 36 percent of 2012 grant dollars and 16 percent of grants. The majority of this support targeted arts programs of higher and graduate educational

institutions, including several exceptionally large capital and general operating support grants. By comparison, elementary and secondary schools received less than 5 percent of total arts education grant dollars. In general, this finding reflects the disinclination of most grantmakers to provide funding to public elementary and secondary schools directly.

Finally, the number of organizations in the sample benefiting from arts education support jumped nearly 30 percent

between 1999 and 2012, from just over 1,500 to more than 1,950. Nonetheless, the average number of grants received by organizations in 2012 — 2 grants — was unchanged from 1999. Some institutions, however, received far more grants. At the top of the list, the Kansas City Ballet Association received 28 grants, followed by the Juilliard School (21) and Children’s Theater Company and School (20).

TABLE 5. Giving for arts education by recipient type, 2012

Recipient type	Capital support dollars ³	No. of grants	All other support dollars ⁴	No. of grants	Total amount	%	Total no. of grants	%
Arts organizations	\$15,046,206	95	\$168,730,748	2,824	\$183,776,954	60.4	2,919	78.2
Performing arts organizations	7,417,325	44	60,845,656	1,323	68,262,981	22.4	1,367	36.6
Performing arts education organizations	2,012,190	15	20,865,940	346	22,878,130	7.5	361	9.7
Music organizations	1,517,500	7	15,377,367	384	16,894,867	5.6	391	10.5
Theaters	2,625,135	13	12,052,086	333	14,677,221	4.8	346	9.3
Dance organizations	1,212,500	8	6,997,979	172	8,210,479	2.7	180	4.8
Performing arts centers	50,000	1	4,421,235	66	4,471,235	1.5	67	1.8
Other performing arts groups	0	0	1,131,049	22	1,131,049	0.4	22	0.6
Arts-focused higher educational institutions	620,000	3	33,504,736	298	34,124,736	11.2	301	8.1
Multidisciplinary arts education organizations	1,675,595	25	34,203,249	535	35,878,844	11.8	560	15.0
Museums	1,989,924	6	13,236,876	171	15,226,800	5.0	177	4.7
Visual arts organizations	483,390	8	9,754,659	191	10,238,049	3.4	199	5.3
Multidisciplinary arts centers	49,500	3	3,242,664	64	3,292,164	1.1	67	1.8
Arts councils	.	.	1,185,112	25	1,185,112	0.4	25	0.7
Ethnic/folk arts organizations	2,785,472	4	1,149,975	31	3,935,447	1.3	35	0.9
Other arts organizations ¹	25,000	2	11,607,821	186	11,632,821	3.8	188	5.0
General-purpose educational institutions	\$46,362,501	68	\$63,463,840	529	\$109,826,341	36.1	597	16.0
Higher educational institutions	39,865,026	25	32,594,075	195	72,459,101	23.8	220	5.9
Elementary/secondary schools ²	3,407,975	28	9,945,447	136	13,353,422	4.4	164	4.4
Other educational institutions	3,089,500	15	20,924,318	198	24,013,818	7.9	213	5.7
Human service agencies	\$190,000	2	\$5,466,006	131	\$5,656,006	1.9	133	3.6
Youth development organizations	40,000	1	2,441,549	79	2,481,549	0.8	80	2.1
Other human service agencies	150,000	1	3,024,457	52	3,174,457	1.0	53	1.4
Community improvement organizations	\$0	0	\$2,573,150	43	\$2,573,150	0.8	43	1.2
Other organizations	\$60,160	3	\$2,495,720	38	\$2,555,880	0.8	41	1.1
Total	\$61,658,867	168	\$242,729,464	3,565	\$304,388,331	100.0	3,733	100.0

Based on all grants of \$10,000 or more awarded by the top 1,000 foundations by total giving. Of this sample, 560 funders awarded arts education grants. Only grants to organizations are included.

1. Includes arts advocacy organizations, multipurpose arts associations, governmental art agencies, arts fundraising organizations, film/video groups, artist’s services organizations, and other arts organizations.
2. Elementary and secondary education are grouped together in one category because for most grants further detail is often unavailable to provide more narrow breakdowns.
3. Grants provide capital support and may occasionally be for multiple types of support.
4. Includes all grants except those identified as providing capital support. Not all grants are able to be coded for types of support; therefore some grants in this category may be for capital support.

ARTS EDUCATION FUNDING FOR SPECIFIC POPULATIONS

Within their arts education giving, some foundations direct support to vulnerable or underserved populations, such as to specific ethnic or racial groups or communities of color in general and to the economically disadvantaged. This giving targets both subsets of children and youth — the predominant beneficiaries of arts education support — and others.

For example, the W. K. Kellogg Foundation made a \$352,000 grant to Living Arts (MI) to improve literacy, academic

outcomes, and school attendance for vulnerable children by providing support for the training of parents and teachers in arts-infused methodology, and making essential arts experiences available in the Vistas Nuevas Head Start Centers and schools of Southwest Detroit; and the James Irvine Foundation provided a \$90,000 grant to Eastside Arts Alliance (CA) to develop a mural park, providing opportunities for low-income, Latino youth from East Oakland to create graffiti art murals.

ARTS EDUCATION FUNDING BY FUNDER AND RECIPIENT REGION

Foundations in the Northeast provided the largest share of arts education funding in 2012 (36.3 percent), led by funders based in New York and Pennsylvania. Three of the top 10 arts education funders were located in the Northeast—the second-ranked Andrew W. Mellon Foundation (NY), sixth-ranked Wallace Foundation (NY), and ninth-ranked PNC Foundation (PA). The Midwest accounted for the second largest share of arts education grant dollars awarded (26.6 percent), followed by the West (21.7 percent) and the South (15.3 percent).

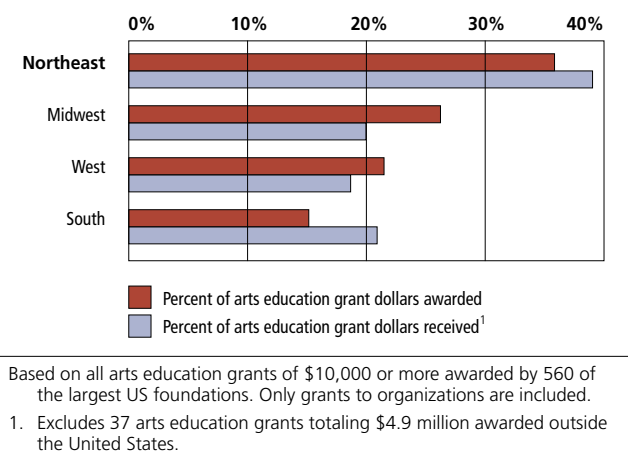
Given that the Northeast is home to many of the largest arts education funders and prominent arts education institutions, it is not surprising that organizations in the region received the largest share of grant dollars (39.4 percent). Five of the top 10 recipients of arts education giving

TABLE 6. Giving for arts education by population focus, 2012

Population group	Amount	%	No. of grants	%
Aging/elderly/senior citizens	\$944,050	0.3	19	0.5
Children and youth	112,541,415	37.0	1,994	53.4
Crime or abuse survivors	110,000	0.0	7	0.2
Economically disadvantaged	40,615,327	13.4	742	19.9
Low-income — general	40,385,327	13.3	736	19.7
Homeless	295,000	0.1	12	0.3
Migrant workers	101,000	0.0	2	0.1
Specified ethnic or racial groups	28,374,597	10.0	527	14.1
General	22,636,325	7.4	411	11.0
Asians, Pacific Islanders, Asian and Pacific Islander Americans	185,000	0.1	7	0.2
Africans, African Americans, Blacks	3,796,269	1.2	79	2.1
Hispanics and Latinos	2,970,725	1.0	48	1.3
Native Americans	217,000	0.1	5	0.1
Indigenous peoples	355,000	0.1	3	0.1
Other specified groups	391,000	0.1	4	0.1
LGBT	45,000	0.0	2	0.1
Immigrants and refugees	355,000	0.1	10	0.3
Men and boys	939,514	0.3	27	0.7
Military and veterans	45,000	0.0	3	0.1
Criminal convicted	817,815	0.3	23	0.6
People with AIDS	77,032	0.0	2	0.1
People with disabilities	2,058,136	0.7	64	1.7
Women and girls	4,803,191	1.6	53	1.4
Not specified/general public	181,482,143	59.6	1,596	42.8

Based on all arts education grants of \$10,000 or more awarded by 560 of the largest US foundations. Only grants to organizations are included. Figures represent only grants awarded to groups that could be identified as serving specific populations or grants whose descriptions specified a benefit for a specific population. These figures do not reflect all giving benefiting these groups. In addition, grants may benefit multiple population groups (e.g., a grant for economically disadvantaged youth), and would therefore be counted more than once.

FIGURE 5. Arts education funding by funder and recipient region



were based in the Northeast, led by Yale University, which received \$20.8 million.⁴ Following the Northeast by share of grant dollars received were organizations in the South (21.3 percent), Midwest (20.3 percent), and West (18.9 percent).

Nearly all arts education grant dollars supported domestic programs. Just 2.3 percent targeted cross-border recipients in 2012, while roughly 4.5 percent funded US-based international arts programs.

LOOKING AHEAD

Nearly a decade has passed since Foundation Center and Grantmakers in the Arts first studied foundation funding for arts education. That earlier examination noted that several newer foundations were showing an interest in arts education, which boded well for the field, and also that “Foundations have served as key proponents and supporters of arts education, and that role will likely expand in the years ahead.” Both predictions held true as arts education funding remained largely stable during a period markedly

more volatile than was true of the preceding decades.

What comes next for arts education funding? Certainly, economic prospects appear healthier than in recent years, suggesting the potential for growth in overall arts education grantmaking. More critical to the future of the field, however, may well be the work of current arts education funders in continuing to engage a new generation of donors. The contributions of arts education to a creative and prosperous society are well documented. But these learnings may need to be translated in a way that engages donors who want to be more hands-on, see their priority as addressing specific populations, and may not immediately connect with how support for arts education can facilitate those goals. Arts education is a powerful resource for ensuring greater equity in society, and funders need only find the most resonant ways to make this case.

NOTES

1. Capital support accounted for 23 percent of arts education giving in 2012 and was relatively evenly distributed among the major arts education fields. For example, performing arts education represented approximately 46 percent of overall grant dollars in the latest sample and 42 percent when capital support was excluded.
2. Not all grants related to ethnic arts education are captured in the multidisciplinary arts education subfield. For example, some of these grants were included in visual arts and in performing arts education.
3. Grants for science museum education programs were excluded from this analysis.
4. If capital grants were excluded, Yale University's arts education support would decrease to \$2.8 million.

GRANTMAKERS IN THE ARTS

OFFICERS AND EXECUTIVE COMMITTEE

Robert Booker, *Chair*
Arizona Commission on the Arts

Kristen Madsen, *Vice Chair*
*The GRAMMY Foundation/
MusiCares*

Justin D. Laing, *Secretary*
The Heinz Endowments

Glyn Northington, *Treasurer*
Target

Maurine Knighton
Nathan Cummings Foundation

John E. McGuirk
*The William and Flora Hewlett
Foundation*

DIRECTORS

T. Lulani Arquette
*Native Arts and Cultures
Foundation*

Roberto Bedoya
Tucson Pima Arts Council

Denise Brown
Leeway Foundation

Arlynn Fishbaugh
Montana Arts Council

Ken Grossinger
CrossCurrents Foundation

Amy Kitchener
*Alliance for California Traditional
Arts*

Kerry McCarthy
The New York Community Trust

Laura Aden Packer
The Howard Gilman Foundation

Angelique Power
The Joyce Foundation

Margaret Conant Reiser
*John H. & Wilhelmina D. Harland
Charitable Foundation, Inc.*

Felicia Shaw
The San Diego Foundation

Gary Steuer
Bonfils-Stanton Foundation

Caitlin Strokosch
Alliance of Artists Communities

Edwin Torres
*New York City Department of
Cultural Affairs*

F. Javier Torres
ArtPlace America

San San Wong
Barr Foundation

Laura Zucker
*Los Angeles County Arts
Commission*

STAFF

Janet Brown, President & CEO

Jim McDonald, Deputy Director/
Director of Programs

Tommer Peterson, Deputy Director/
Director of Programs (retired)

Kathy Lindenmayer, Director of
Development & Membership

Jan Bailie, Director of Finance
& Operations

Noah Barnes, Membership Manager

Su'n Chon, Program Manager

Steve Cline, Web & Knowledge
Manager



Grantmakers in the Arts
Supporting a Creative America

4055 21st Ave W, Suite 100
Seattle, WA 98199-1247
www.giarts.org