

Making Waves

A photograph of a field of tall, golden-brown grasses or wheat stalks with green heads, blowing in the wind against a blue sky. The grasses are the central focus, with their long, thin blades and green heads creating a sense of movement. The background is a clear blue sky with some light clouds. The overall tone is bright and natural.

COMMUNITIES FOUNDATION OF OKLAHOMA
Annual Report 2007



Communities Foundation of Oklahoma Leadership

Board of Trustees

Chair ~ Richard Ryerson, Alva
 Vice Chair ~ April Stobbe, Shawnee
 Secretary ~ Richard Dixon, Duncan
 Treasurer ~ Wes Stucky, Ardmore
 Malinda Berry Fischer, Stillwater
 Jenny Hendrick, Oklahoma City
 Monica McCasland, Duncan
 Jeannine Rainbolt, Oklahoma City
 Richard Ratcliffe, Weatherford

Management Team

Frank W. Merrick, President
 Foundation Management, Inc.
 Susan R. Graves
 Executive Director
 Katherine Ray, CPA
 Chief Financial Officer
 Amy Klinge
 Advancement Director
 Amanda Siebert
 Administrative Assistant
 Ann Hopkins
 Financial Assistant

Advisory Board of Governors

Ed Apple, Duncan
 Steve Beebe, Duncan
 Ron Beer, Stillwater
 David Boren, Norman
 Lou Christian, Blanchard
 Julie Cohen, Norman
 Terrence Cooksey, Duncan
 Jimmy Cooper, Duncan
 Nancy Ford, Shawnee
 Marseda Garrison, Elk City
 Mary Beth Glass, Newkirk
 Terry Graham, Cherokee
 Lou Hall, Pauls Valley
 Jean Harbison, Lawton
 Judge Robert Henry, Oklahoma City
 Jim Howard, Tahlequah
 Craig Knutson, Norman
 Jodi Lewis, Piedmont
 Tom McCasland, Jr., Dallas, TX
 Melvin Moran, Seminole
 Gene Nelson, Duncan
 State Senator Susan Paddack, Ada
 Ann Powell, Norman
 H. E. "Gene" Rainbolt, Oklahoma City
 Larry Roberts, Miami
 Jim Rodgers, Blackwell
 Pam Treadwell, Muskogee
 Bruce Von Tungeln, Weatherford

Committee Volunteers

Dwaine Penner ~ Don Sickles ~ Leslie Rainbolt-Forbes ~ Jayna Lawrence-Vaughn ~ Jon Trudgeon



Donor Spotlight ~ Betty & Ed Apple

Ed Apple has known Communities Foundation of Oklahoma before it even existed. Along with Tom McCasland, Steve Beebe and others, Ed started the Duncan Community Foundation in 1992. Just seven years later, their love for rural Oklahoma expanded into the statewide Communities Foundation of Oklahoma.

“We knew that rural Oklahoma needed a place to allow citizens to give back to their communities,” said Ed.

From 1992 through today, Ed Apple has been generous with his time, talents, and treasures. In 2007, in celebration of his wife, Betty’s, 27 years of nursing practice at Duncan Regional Hospital, the Apple family established the Betty Apple Excellence in Nursing Prize. Awarded to nurses at Duncan Regional Hospital, the Prize celebrates and encourages nurses who set high expectations for themselves and work toward excellence.

“From the early days of Communities Foundation of Oklahoma, we’ve always believed that the pursuit of excellence is the most worthy of goals,” said Ed. “Betty lives that and we believe that there are many other nurses who live that concept as well.”

In Memory ~ Jeannine Rainbolt

Communities Foundation of Oklahoma suffered a great loss with the passing of Jeannine Rainbolt on September 30, 2007. As a member of the Board of Trustees and Grants Committee, Jeannine was a vital part of the growth and success of the organization.

Her enthusiasm for rural Oklahoma was especially reflected as a member of the Grants Committee. During the last granting cycle for the Oklahoma Initiative Fund, Jeannine spoke up on behalf of the band of one small school, Mounds High School. In that one vote, it was clear that her impact was felt by so many in our CFO family from very small communities to the entire state of Oklahoma.



As her obituary read, “hers was a life well lived and from which many will be inspired and from which many will benefit.”



Community Funds

Every community, no matter its economic status, has assets upon which to build. Abundant resources lie in the spirit and energy of the people, their place and their common history. Communities Foundation of Oklahoma's community funds are intent on creating a future for our communities that is as strong and productive as our citizens. In its dedication to helping communities meet the challenges of changing times, Communities Foundation of Oklahoma supports and assists in the establishment of rural community funds with local advisory boards that focus on meeting local needs and enhancing community opportunities.

Alfalfa County Community Fund/
 Pioneer Spirit Foundation
 Alva Community Fund
 Blackwell Community Foundation
 Duncan Community Fund
 Garber Foundation Community Fund
 Laverne Community Foundation
 McAlester Community Fund
 Miami Community Fund
 The Norman Community Foundation

Pauls Valley Community Foundation
 Share the Spirit Rogers County Community Fund
 Seminole Community Events Fund
 Shawnee Community Foundation
 Smithville Community Fund
 Stillwater Community Fund
 Tahlequah Community Fund
 Tishomingo Community Fund
 Weatherford Community Fund
 Wewoka Community Fund



Community Spotlight ~ The Norman Community Foundation

Since 1995, The Norman Community Foundation has been dedicated to connecting donors with the charitable needs of Norman. By helping individuals, families, and organizations create funding vehicles for charitable purposes, the Foundation works to preserve and enhance Norman's unique quality of life forever.

With assets totaling over \$1.6 million, NCF has distributed nearly \$500,000 back to the community and its charitable agencies. In 2007, Assistance League of Norman received a grant from the Norman Fund to purchase duffle bags for their Operation School Bell

Program. "Before, students in need who went shopping for new clothes and school items at Assistance League of Norman offices would have to carry their new items in a trash bag," said Suzanne McAuley, NCF Board of Directors member. "With the Norman Fund grant, students were able to pack their items in a brand new duffle bag making them feel extra special and just like every other student going school shopping."

There are many reasons to love Norman, Oklahoma and The Norman Community Foundation offers the perfect opportunity for residents to give back to the place they call home.



Types of Funds

Communities Foundation of Oklahoma is committed to meeting the charitable needs of all Oklahomans in communities large and small. By offering several types of funds, donors can give back to communities in many different ways.

Designated Endowment Funds

Established by individual donor or donor group to provide permanent endowment for a specific nonprofit or charitable activity

Agency Endowment Funds

Created by a nonprofit organization to provide permanent endowment for its projects, needs and activities

Fiscal Sponsorship Funds

Created for a specific project or purpose as a short-term fund and may be used if no 501(c)(3) exists for an organization

Donor Advised Funds

Created when a donor would prefer more input into annual distribution and would like to distribute funds to any number of charitable concerns each year

Scholarship Funds

Designated for awarding scholarship dollars to students selected by a committee representing fund advisors or the Communities Foundation of Oklahoma's Grant Committee

Field of Interest Funds

Allows donors to target gifts to causes important to them through grants in their specific interest area

Unrestricted Funds

Addresses a broad range of current and future needs across the state as determined by the Foundation

Escrow Funds

Established when a donor wishes to place funds with the Foundation without immediately designating a specific charity or purpose

Oklahoma Initiative Fund

In 2007, 26 organizations were awarded a total of \$56,000 in grants from the Oklahoma Initiative Fund, CFO's unrestricted fund benefiting organizations across Oklahoma.

7:57 Youth Ministries, Assistance League of Norman, Burlington Education Foundation, Calm Waters, The Children's Center, Chisholm Trail Arts Council, City Care, The Education and Employment Ministry, Friends of the Library of McAlester, Gabriel's House, Jasmine Moran Children's Museum, Lake Thunderbird Educational Foundation, Mabee Gerrer Museum of Art, Mounds Education Foundation, Northwest Technology Center Foundation, Presbyterian Urban Missions, Red River Technology Center, Regional Food Bank, Shawnee Education Foundation, Shawnee Family YMCA, Suited for Success, Variety Health Center, Western Plains Youth and Family Services, Where Little Things Count—Shawnee Early Learning Center, Women's Oklahoma Golf Association Hall of Fame, Youth Recovery Documentary



“The success of the Oklahoma Educational Technology Trust will benefit more than just our public schools. These students will matriculate into our CareerTech centers, universities and colleges, enhancing our education system from kindergarten to post-secondary education. OETT is helping create better schools, better communities, and therefore, a better Oklahoma.” ~ Oklahoma Attorney General Drew Edmondson



Creating a better Oklahoma through technology education and professional development is not just a dream, it is a reality through the Oklahoma Educational Technology Trust. Established in 2001 with a \$30 million contribution from AT&T Oklahoma as a result of an agreement between Attorney General Drew Edmondson and AT&T Oklahoma, OETT equips Oklahoma public schools with the technology and skills necessary to compete in the global marketplace. This technology, combined with professional development training, students, faculty and staff across the state are integrating technology into the classroom creating widespread waves of change.

“The Trust does not want to make random acts of improvement in Oklahoma classrooms. OETT grant schools have seen many changes in the equipment available to students, teaching methods used by educators, and most of all, the enhancement of the learning process.” ~ Bob Stafford, OETT chairman



~ Since 2003 ~

97 Oklahoma schools awarded grants
\$9 million in grants distributed
\$1.6 million awarded for professional training and laptops
38,500 students affected by grants
2600 teachers & **1000** superintendents received professional training
217% larger increase in Academic Performance Index scores at OETT schools

Oklahoma Educational Technology Trust Board of Trustees & Appointing Entity

- Bob Stafford, Chair, AT&T
- Keith Ballard, Oklahoma State School Boards Association
- Phil Berkenbile, Oklahoma Department of Career and Technology Education
- Lela Odom, Oklahoma Education Association
- State Senator Susan Paddock, Oklahoma State Senate
- Randall Raburn, Cooperative Council for Oklahoma School Administration
- State Representative John Wright, Oklahoma House of Representative

Making a Difference

Oklahoma Educational Technology Trust Grantees in Action



~ Alva Public Schools ~

Awarded an OETT grant in 2005, Alva Public Schools has shown statistically significant growth. In both development of a professional learning community and technology integration, the district created a learning atmosphere that impressed all involved.

Through the \$75,000 grant, the district purchased LCD projectors and AlphaSmart Neos allowing the high school teachers to use the Internet as an instructional tool while giving younger students the opportunity to enhance their writing skills. Extensive planning by the district administration ensured that this technology impacted each student at every level.

“The first steps that we took with the technology from the OETT grant made a huge difference,” said one middle school teacher. “We know that technology is going to play an important role in our students’ futures, and we want to be sure that Alva Public Schools prepares them for that future.”

With the success of the new technology, demand for additional technology continued to grow for each building. Superintendent Don Rader utilized all available funds to purchase interactive SmartBoards and upgraded elementary computer labs to give each student the experience of authentic, real-world learning.

The OETT grant in Alva Public Schools served as a catalyst for increasing district collaboration between administrators, faculty, and staff. Though the grant was focused on technology, its benefits are felt in all study areas, in all buildings, and in all those affecting the lives of students in Alva.



2007 Grantees

In 2007, students in 18 Oklahoma public schools received over \$1.2 million for new technology and professional development.

Bartlesville Wayside Elementary School; Bixby Central Elementary School; Calvin Elementary School; Cherokee Elementary School; Chickasha Elementary School, Muskogee; Eldorado Elementary School; Hooker Elementary School; Limestone Elementary School, Sand Springs; Mayo Demonstration Elementary School, Tulsa; McKinley Elementary School, Norman; Muldrow Middle School; Nicoma Park Intermediate Elementary School, Choctaw; Perkins-Tryon High School; Pocola Elementary School; Salina Elementary School; Teague Elementary School; Vici Public School District; Westville Upper Elementary School



Women's foundation of Oklahoma

An Endowed Fund of Communities Foundation of Oklahoma

Donor Spotlight ~ Merle Chambers

Merle Chambers is proof that one woman's idea can be the catalyst to change the world...or at least Oklahoma. Her family was one of many who profited from the oil and gas industry in Oklahoma, Wyoming, Montana, and North Dakota. In an effort to say thank you to these states who gave her family so much, Merle had a desire to give back. As president of Chambers Family Fund, she is accustomed to giving away money. Her desire, however, was to do more than just give away money, she wanted to make a real change. After understanding the dire situation of women in each of these states, Merle gave back in a big way by founding four women's foundations.



The Women's Foundation of Oklahoma, an endowed fund at Communities Foundation of Oklahoma, was established in 2003 with a challenge grant from Chambers Family Fund with a priority to build a permanent resource for women and girls in Oklahoma. To allow people to feel real ownership, Merle challenged the WFO advisory board to raise \$500,000 in five years to be matched dollar for dollar. In addition, during the building years, Chambers Family Fund contributed \$25,000 for operating expenses and another \$50,000 a year to allow for immediate grantmaking. Since 2004, the Women's Foundation of Oklahoma has invested nearly \$220,000 through grants to organizations focused on the economic self-sufficiency for women and brighter futures for our state's girls.

As a child, Merle grew up with strong female role models from her grandmothers to her own mother. She was always taught to believe she could do anything she put her mind to and her dreams were endless. Through her generous gift, she has given women and girls the opportunity to live a better today and dream of a brighter tomorrow.



Women's Foundation of Oklahoma Advisory Board

Front Row: Sandy Ingraham, Lincoln County;
Claudia San Pedro, Oklahoma City; Hilary Kitz, Tulsa;
Sharon Neuwald, Oklahoma City
Back Row: Marilyn Murrell, Arcadia;
Joe Anna Hibler, Chair, Weatherford; Kathie Coyle, Tulsa;
Anne Morgan, Norman; Merle Chambers, Denver, Colorado;
Melinda Johnson, Oklahoma City
Not Pictured: Prudence Little, Madill

Faces of Change

Women's Foundation of Oklahoma Grantees in Action

~ CHOICES ~

To an uninformed visitor, the Hispanic girls of CHOICES appear to be typical teenagers. They dress in jeans and fashionable shirts, they chatter excitedly with each other, and they complain of problems with parents and teachers. Beneath all this, however, are deeper socioeconomic and cultural issues that distinguish these girls from their peers. Being Hispanic means that these girls have unique challenges and increased family responsibilities. CHOICES—Challenge, Hope, Opportunity, Insight, Changes, Empowerment and Success—assists these girls by teaching them valuable life skills and encouraging them to take action. The Women's Foundation of Oklahoma awarded CHOICES a grant in 2005 acknowledging the importance of CHOICES as it guides Hispanic girls along paths to bright horizons and hopeful futures.



~ Resonance & FORCE ~

Oklahoma leads the nation and the world in the rate it incarcerated women—nearly 143% higher than the national average. Dolores Beeler lived this statistic as a convicted drug dealer. After being released from prison, she found job placement assistance from Resonance, an organization that assists women facing many types of difficulties in their life. Penny Painter of Resonance saw the potential in Dolores and asked her to create a new program named

FORCE: Female Offenders Recovering, Conquering, and Educating. This group works to confront issues women face after being release from prison such as discriminatory housing and lack of job placement as well as serving as a support group for women working to start over. The Women's Foundation of Oklahoma awarded FORCES a grant in 2005 to assist the group in sharing information, establishing political connections, and creating support for their causes especially the issue of voting rights for former felons.

2007 Grantees

In 2007, the Women's Foundation of Oklahoma provided grants to six non-profit organizations across Oklahoma, totaling over \$54,000.

Boys & Girls Club of Oklahoma County
New Hope Camp

Oklahoma State Regents for Higher Education on behalf of SMART: Single Mothers
Academic Resource Team

Planned Parenthood of Arkansas & Eastern Oklahoma
Planned Parenthood of Central Oklahoma
Rose State College Foundation

Financials ~ Fiscal Year 2007

Statement of Financial Position

ASSETS

JUNE 30, 2007

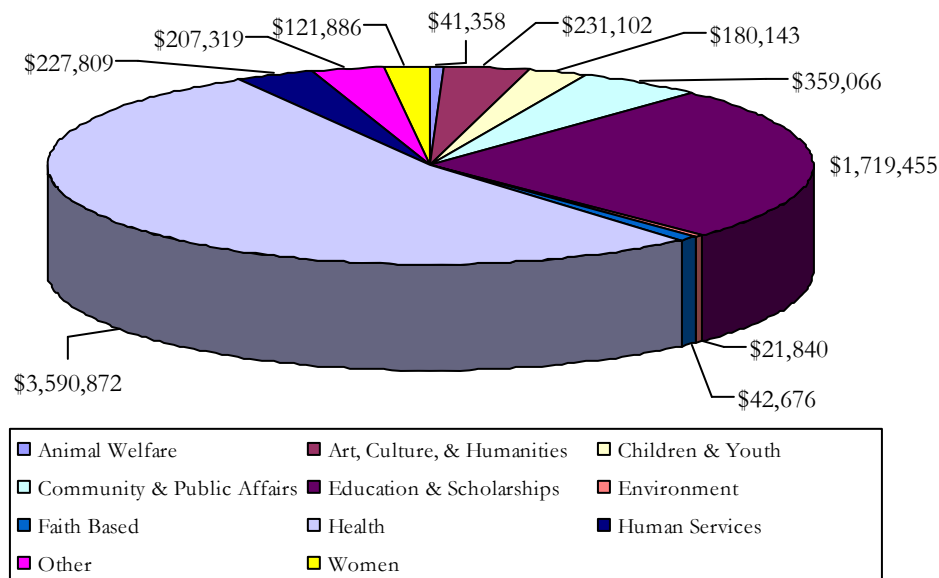
Assets in Checking/Money Market	\$ 4,493,100
Prepaid Expenses	\$ 3,775
Investments	\$ 20,070,790
Pledges & Accounts Receivable	\$ 1,621,762
TOTAL ASSETS	\$ 26,189,427

LIABILITIES & NET ASSETS

Grants & Accounts Payable	\$ 528,433
Agency Transfers	\$ 8,643,138
Net Assets	\$ 17,017,856
TOTAL LIABILITIES & NET ASSETS	\$ 26,189,427

Statements have been audited by Cole & Reed, P.C. Complete audit report, form 990 and IRS tax exemption documents may be downloaded at www.cfok.org.

Grants & Distributions

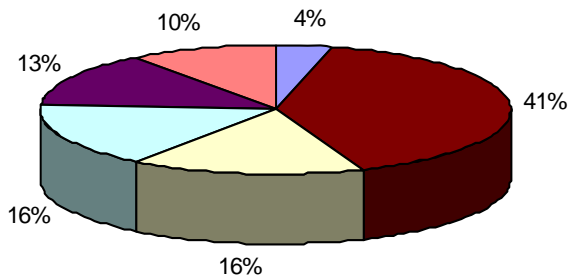


Total \$6,774,530
(includes interfund grants)

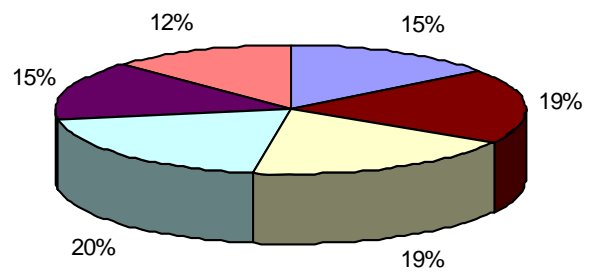
Investment Report ~ Investment Pools as of June 30, 2007

Current Allocations

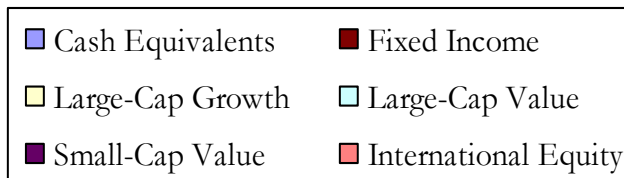
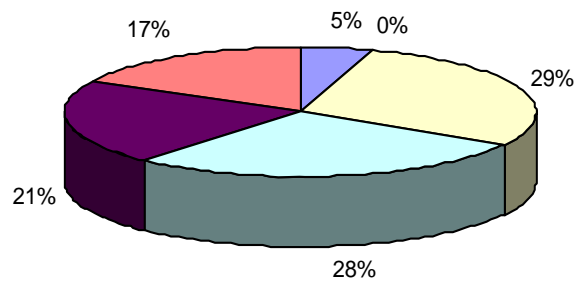
Balanced Pool



Growth Pool



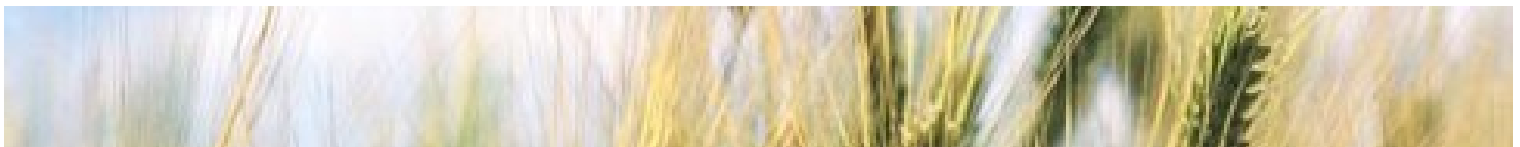
Aggressive Pool



Performance—Balanced Pool

	YTD—June 30, 2007	Trailing 12 Months	3-Year (Annualized)	5-Year (Annualized)
Portfolio	3.9%	10.9%	7.7%	7.7%
Benchmark: S&P 500 Index/ LB Int. Agency Index	4.5%	13.7%	8.0%	7.8%

Additional information on individual investment managers, portfolio performance on individual investment pools, and investment fees are available upon request.





COMMUNITIES FOUNDATION OF OKLAHOMA

2932 N.W. 122nd, Suite D ~ Oklahoma City, Oklahoma ~ 73120

405/488.1450 ~ 877/689.7726 toll-free ~ 405/755.0938 fax

www.cfok.org